

HOTEL CALIFORNIA

Eagles

Hotel California (1976); Hell freezes over (1994)

INTRO1 : Bm A/B Em F# (2x)

INTRO2 : Bm F#/A# A E/G#
G D Em F# (3x)

Bm F#
On a dark desert highway, cool wind in my hair
A E
warm smell of colitas, rising up through the air
G D
Up ahead in the distance, I saw a shimmering light
Em
My head grew heavy and my sight grew dim,
F#
I had to stop for the night
Bm F#
There she stood in the door way, I heard the mission bell
A
And I was thinking to myself,
E
This could heaven or this could be hell
G D
Then she lit up a candle, and she showed me the way
Em
There were voices down in the coradoor,
F#
I thought I heard them say

G D
Welcome to the Hotel California
F# Bm (RIFF1)
Such a lovely place, such a lovely face
G D
They're living it up in the Hotel California
Em F#
Anytime of year you can find it here

Bm

Her mind was Tiffany Twisted,

F#

She got the Mercedes Benz.....

A

She had a lot of pretty, pretty boys,

E

Who she calls friends

G**D**

How they dance in the courtyard, sweeeeet summer sweat

Em**F#**

Some dance to remember, some dance to forget

Bm**F#**

So I called up the captain, "pleeeeeease bring me my wine"

A**E**

He said "we haven't had that spirit here since 1969"

G**D**

And still those voices are calling from faaaaar awaaaaaay

Em

Wake you up in the middle of the night,

F#

Just to hear them say

REFRÃO**Bm****F#**

Mirrors on the cieling, the pink champaign on ice

A

and she said "we are all just prisioners here

E

Of our own device"

G

And in the master's chambers,

D

They gathered for their feast

Em

They stab it with their stealy knives

F#

But they just can't kill the beast

Bm **F#**
 Last thing I remember, I was running for the door
A **E**
 I had to find the passage back to the place I was before
G **D**
 “Relax”, said the night man, “we are programmed to receive”
Em
 You can check out anytime you'de like,
F#
 But you can't never leave

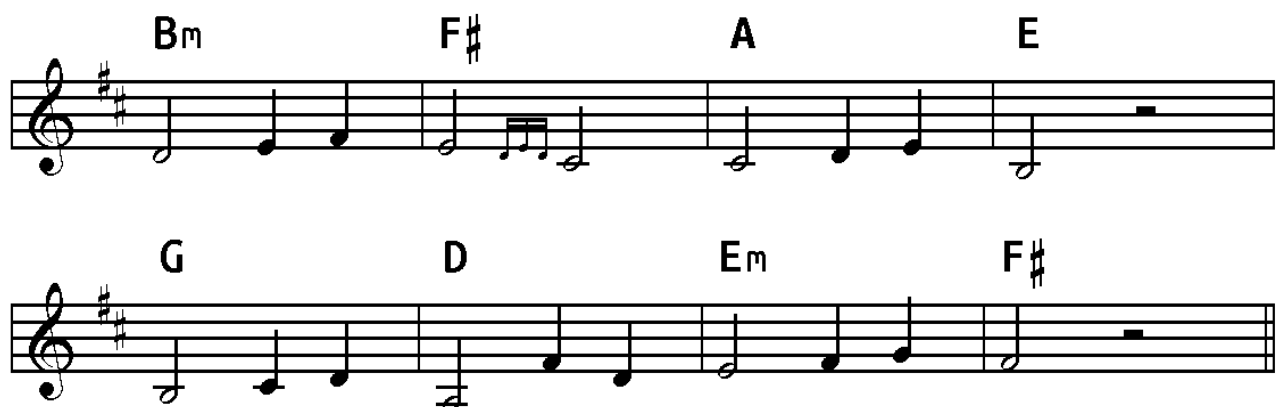
SOLO = ESTROFE (3x)

Bm	F#	A	E
G	D	Em	F#

RIFF1



INTRO2 - melodia



INTR02 - dedilhado

Bm **F#7/A#**

Treble clef, key signature of two sharps (F# and C#), 4/4 time signature. The melody consists of eighth and quarter notes. Below the staff are three lines for guitar fretting: Treble (T), Middle (A), and Bass (B). Fingering numbers are written below the lines.

A(9) **E7(9)/G#**

Treble clef, key signature of two sharps (F# and C#), 4/4 time signature. The melody continues with eighth and quarter notes. Below the staff are three lines for guitar fretting: Treble (T), Middle (A), and Bass (B). Fingering numbers are written below the lines.

G **D**

Treble clef, key signature of two sharps (F# and C#), 4/4 time signature. The melody continues with eighth and quarter notes. Below the staff are three lines for guitar fretting: Treble (T), Middle (A), and Bass (B). Fingering numbers are written below the lines.

Em7 **F#7**

Treble clef, key signature of two sharps (F# and C#), 4/4 time signature. The melody concludes with a half note. Below the staff are three lines for guitar fretting: Treble (T), Middle (A), and Bass (B). Fingering numbers are written below the lines.

DUETO FINAL

Em F#

3

Bm F#7

5

A E

[illegible]

Tonalidade original : SI menor
INTR01 : Em D/E Am B (2x)
INTR02 : Em B/D# D A/C#
C G Am B (3x)

Em On a dark desert highway, **B** cool wind in my hair
D warm smell of colitas, **A** rising up through the air
C Up ahead in the distance, **G** I saw a shimmering light
Am My head grew heavy and my sight grew dim,
B I had to stop for the night
Em There she stood in the door way, **B** I heard the mission bell
D And I was thinking to myself,
A
 This could heaven or this could be hell
C Then she lit up a candle, **G** and she showed me the way
Am There were voices down in the coradoor,
B I thought I heard them say

C Welcome to the Hotel California **G**
B **Em (RIFF1)**
 Such a lovely place, such a lovely face
C They're living it up in the Hotel California **G**
Am Anytime of year **B** you can find it here

Em

Her mind was Tiffany Twisted,

B

She got the Mercedes Benz.....

D

She had a lot of pretty, pretty boys,

A

Who she calls friends

CHow they dance in the courtyard, **G** sweeeeet summer sweat**Am**Some dance to remember, **B** some dance to forget**Em**So I called up the captain, **B** “pleeeeeease bring me my wine”**D****A**

He said “we haven't had that spirit here since 1969”

CAnd still those voices are calling from faaaaar awaaaaaay **G****Am**

Wake you up in the middle of the night,

B

Just to hear them say

REFRÃO**Em****B**

Mirrors on the cieling, the pink champaign on ice

D

and she said “we are all just prisioners here

A

Of our own device”

C

And in the master's chambers,

G

They gathered for their feast

Am

They stab it with their stealy knives

B

But they just can't kill the beast

Em **B**
 Last thing I remember, I was running for the door
D **A**
 I had to find the passage back to the place I was before
C **G**
 “Relax”, said the night man, “we are programmed to receive”
Am
 You can check out anytime you'de like,
B
 But you can't never leave

SOLO = ESTROFE (3x)

Em **B** **D** **A**
C **G** **Am** **B**

RIFF1



INTR02 - melodia



INTR02 - dedilhado

Em **B7/D#**

The first system of the guitar intro consists of two measures. The first measure is in the key of E major (one sharp) and 4/4 time, with an Em chord. The second measure is in the key of B major (two sharps) and 4/4 time, with a B7/D# chord. The notation includes a treble clef, a key signature of one sharp (F#), and a 4/4 time signature. The guitar part is written on a six-string staff with fret numbers (0, 2, 3, 4) and fingerings (1, 2, 3, 4) indicated below the notes.

D(9) **A/C#**

The second system of the guitar intro consists of two measures. The first measure is in the key of D major (two sharps) and 4/4 time, with a D(9) chord. The second measure is in the key of A major (three sharps) and 4/4 time, with an A/C# chord. The notation includes a treble clef, a key signature of two sharps (F#, C#), and a 4/4 time signature. The guitar part is written on a six-string staff with fret numbers (0, 2, 3, 4) and fingerings (1, 2, 3, 4) indicated below the notes.

C **G**

The third system of the guitar intro consists of two measures. The first measure is in the key of C major (no sharps or flats) and 4/4 time, with a C chord. The second measure is in the key of G major (one sharp) and 4/4 time, with a G chord. The notation includes a treble clef, a key signature of no sharps or flats, and a 4/4 time signature. The guitar part is written on a six-string staff with fret numbers (0, 2, 3, 4) and fingerings (1, 2, 3, 4) indicated below the notes.

Am7 **B7**

The fourth system of the guitar intro consists of two measures. The first measure is in the key of A minor (no sharps or flats) and 4/4 time, with an Am7 chord. The second measure is in the key of B major (two sharps) and 4/4 time, with a B7 chord. The notation includes a treble clef, a key signature of no sharps or flats, and a 4/4 time signature. The guitar part is written on a six-string staff with fret numbers (0, 2, 3, 4) and fingerings (1, 2, 3, 4) indicated below the notes.

DUETO FINAL

3

Am **B**

Em **B7**

D **A**

7

C **G**

T 3 5 5 3 5 5 3 5 5 3 5 5
A 5 5 5 5 5 5 5 5 5 5 5 5
B

T 3 3 4 3 4 3 5
A 3 4 5 3 4 5 4
B

9

A_m **B**

T 0 1 2 0 1 2 0 1 2 0 1 2
A 0 0 0 0 0 0 0 0 0 0 0 0
B

T 2 4 4 2 4 4 2 4 5
A 4 4 4 4 4 4 4 4
B

T 1 2 2 1 2 2 1 2 1 2 2 2
A 2 2 2 2 2 2 2 2 2 2 2 2
B

T 4 4 4 4 4 4 5
A 4 4 4 4 4 4 5
B